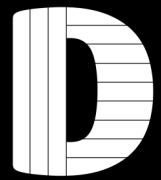


Galvanised Roofing Sheets

Fitting Instructions



How to fit metal roofing sheets!

Tools Required:

Power Drill

Tape Measure

Pencil

Safety Goggles



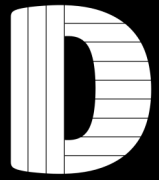
Tech Bolts are recommended

All images are for illustration only. Please see individual item listings for actual item specifications.

Page 1 of 5

Galvanised Roofing Sheets

Fitting Instructions



Overlap

Step 1

Firstly, you are going to need to work out how many sheets you will need across the width of the roof.

With these galvanised sheets, we advise you would need to overlap them by 1 overlap which equates to 50mm.

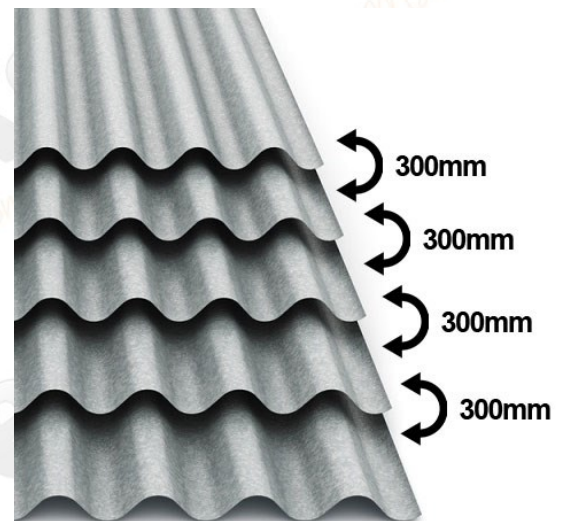
Once you have your two sheets laid on the roof and overlapped, fix these down through the top of the corrugation of the overlapped sheets with suitable fixings.

Fixing through the top of the corrugation is important as weathering would not be able to enter through the sheet where the fixing is secured.



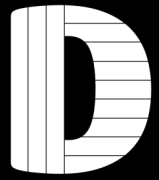
Step 2

Once you have your first row of sheets fitted on as above, you would then need to start on the next length down. We advise length ways, that these would need to be overlapped by **at least 300mm**.



Galvanised Roofing Sheets

Fitting Instructions



Cutting and Securing

Step 3

If you do need to cut these sheets down width or length ways, we advise to use an angle grinder as this gives the best finish on these sheets. Please be careful while cutting these galvanised metal sheets and wear appropriate PPE, i.e. goggles, glasses, gloves, etc. As this can be a dangerous task if all precautions are not taken.

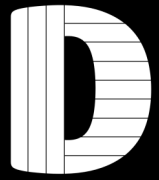


Step 4

When fitting these sheets, you would need to secure them on every other corrugation. Going vertically you would need to fit these on every rafter. We advise the spacing between each rafter to be between 400mm—600mm apart.

Every Other Corrugation



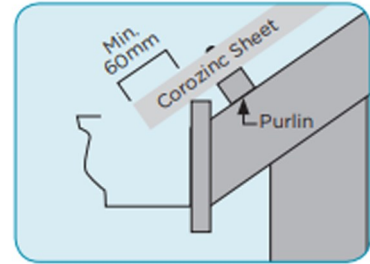


Overhang, Pitches + Apex's

Step 5

We recommend having at least a 60mm overhang on these sheets, to ensure safe water run off into the guttering.

We also advise to have a minimum 5-10° degree pitch for these sheets, as this would also allow water to run off.



Step 6

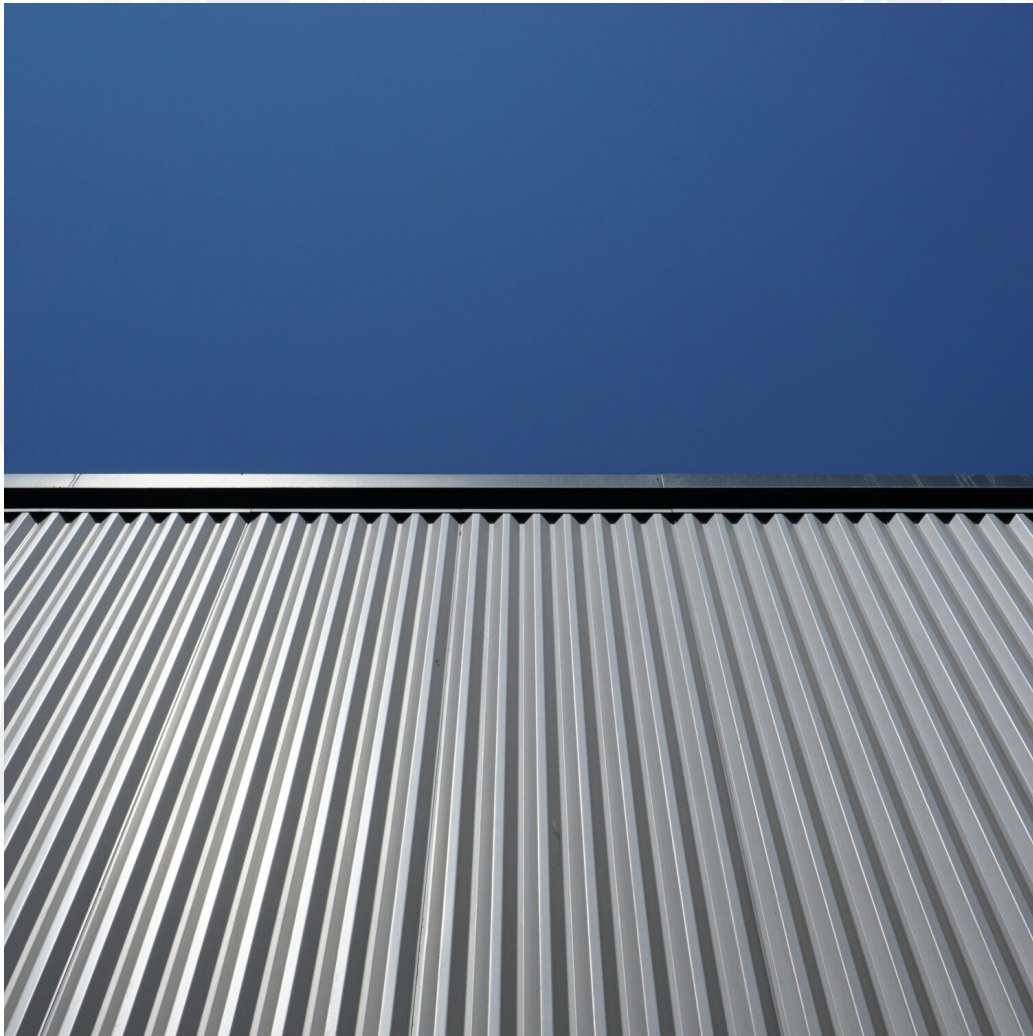
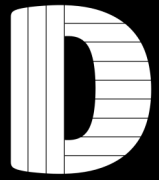
If you do have an apex roof, you would need to run the sheets to the top of each side of the roof, and secure a ridge over the top of each sheet as shown on the image on the right.

You would again need to secure this at the top of the sheet corrugation.



Galvanised Roofing Sheets

Fitting Instructions



Enjoy your new metal roof!

All images are for illustration only. Please see individual item listings for actual item specifications.

Page 5 of 5